

Embedded Ethics as Proactive Regulation of Technology (A New Solution to the Collingridge Dilemma?)

Daniel W. Tigard, PhD

*Institute for History and Ethics of Medicine
Technical University of Munich*

daniel.tigard@tum.de

bidt Ein Institut der Bayerischen
Akademie der Wissenschaften



Key Questions

- What does it mean to “embed” ethics into technology?
- How, if at all, can embedded ethics provide proactive (or preparatory) regulation?
- Might this help to address the “Collingridge Dilemma”?



Big Data, Artificial Intelligence, & “Novel Beings”



“Embedded Ethics” (EE)

- “The practice of integrating the consideration of social, ethical and legal issues into the entire development process in a deeply integrated, collaborative and interdisciplinary way.”

nature machine intelligence Search 🔍 Login 👤

[Comment](#) | [Published: 31 July 2020](#)

An embedded ethics approach for AI development

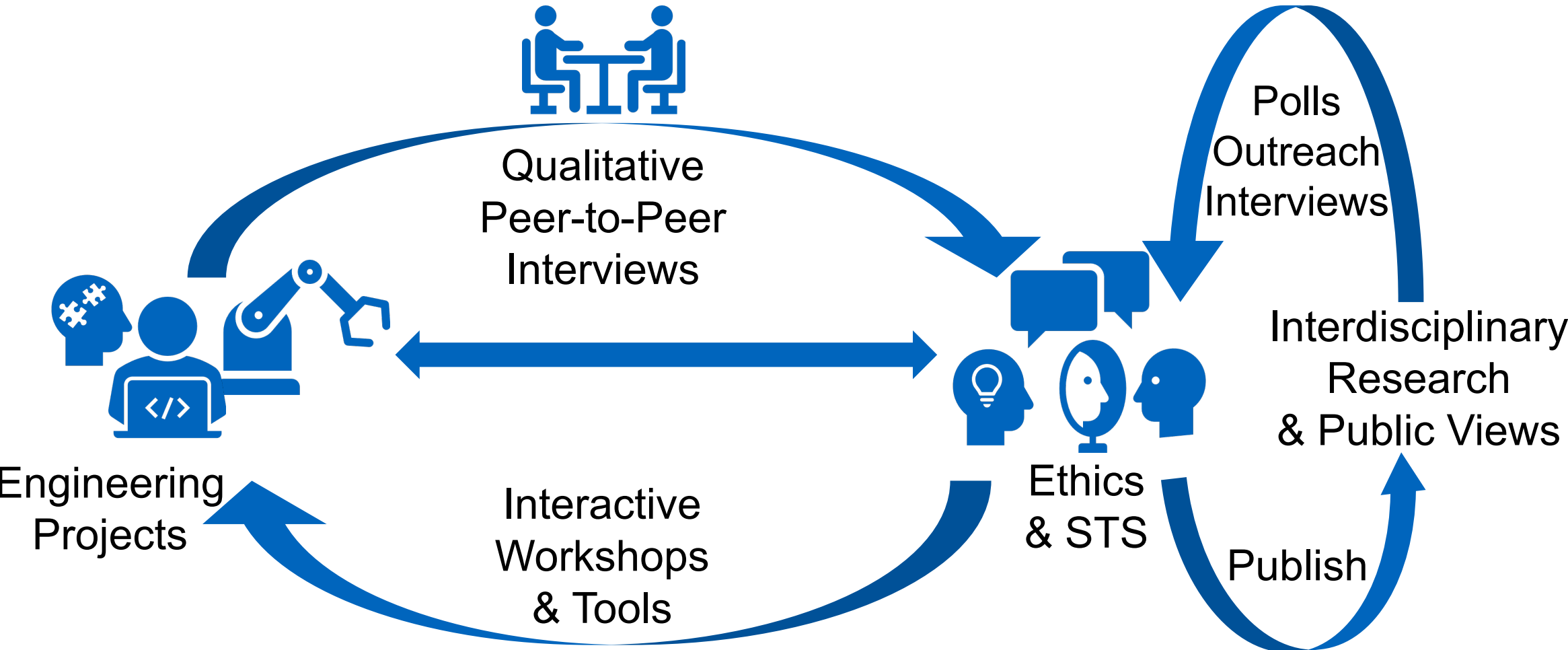
[Stuart McLennan](#) , [Amelia Fiske](#), [Leo Anthony Celi](#), [Ruth Müller](#), [Jan Harder](#), [Konstantin Ritt](#), [Sami Haddadin](#) & [Alena Buyx](#)

[Nature Machine Intelligence \(2020\)](#) | [Cite this article](#)

86 Accesses | **74** Altmetric | [Metrics](#)

 Ein Institut der Bayerischen Akademie der Wissenschaften 

EE: Structure + Methods



Proactive/Preparatory Regulation

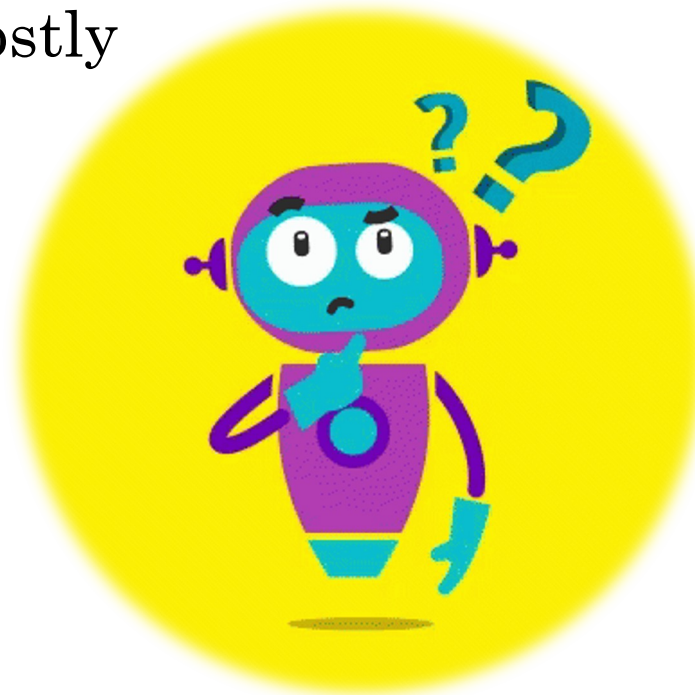
- The attempt to mitigate in advance the potentially negative impacts of technology, and to secure the potentially positive impacts, based upon prediction or ongoing awareness of technology's emergence



“Collingridge Dilemma”

- “during its early stages, when it can be controlled, not enough can be known about its harmful social consequences to warrant controlling its development; but by the time these consequences are apparent, control has become costly and slow.”

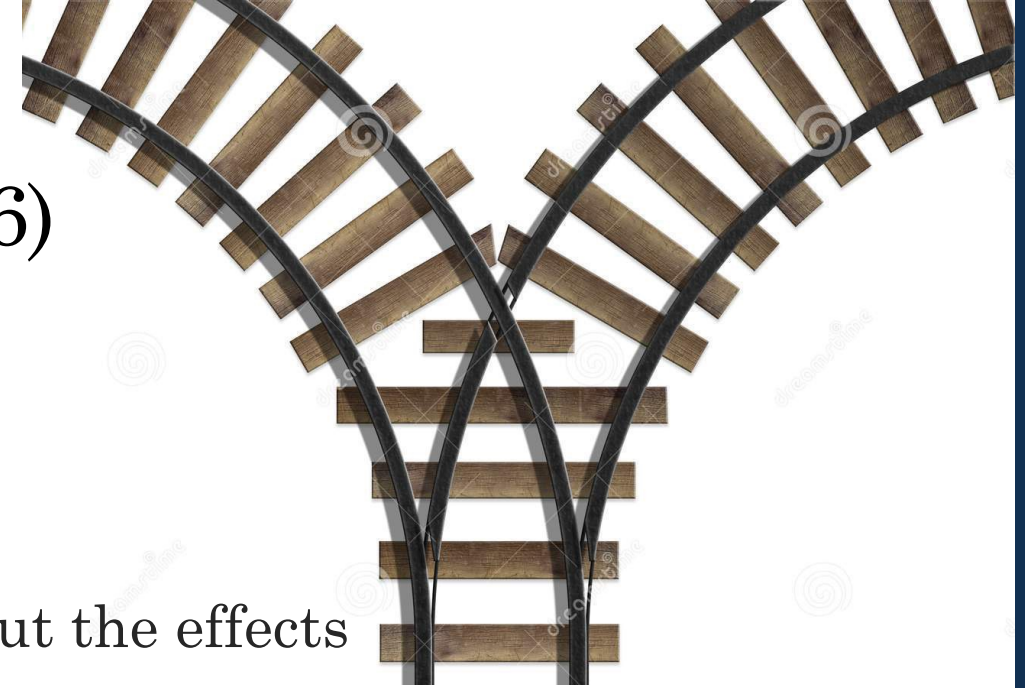
(Collingridge 1980)



2 Interpretations (Croy 1996)

Regulation is either...

- Impossible
 - b/c (now) we don't know enough about the effects
 - (later) it's too costly/slow to help
- Doomed to fail
 - b/c (now) we can't reliably predict
 - (later) tech is “societally embedded” (Kudina and Verbeek 2019)



“Embedded Ethics” as Proactive/Preparatory

- Embedding Ethics \neq Embedding Ethicists
- Goal = foster sincere *sensitivity* in developers themselves, an ability to recognize and effectively think through the social & ethical features of the systems under development.
- Our role is exploratory and assistive
 - Not *monitoring* or *assessing*
- Our role is perhaps temporary

Sensitivity as Flexibility

- Flexibility in developers: remaining open to new future options (Collingridge)
 - But again, problem of predictability
- Flexibility: an ability to adapt to new circumstances **and** newly discovered perspectives and values brought about by our use of technology



Regulating without Regulation

- EE = building competencies in developers for identifying and addressing non-technical features of their work.
- These goals are best met by working collaboratively, rather than monitoring or assessing.
- By avoiding explicit attempts to regulate, we can contribute to the effort to mitigate potentially negative impacts and to secure potentially positive impacts.
- Thus, by avoiding explicit regulation, we can implement preparatory modes of regulation.

Thank you!



Daniel W. Tigard, PhD

*Institute for History and Ethics of Medicine
Technical University of Munich*

daniel.tigard@tum.de

